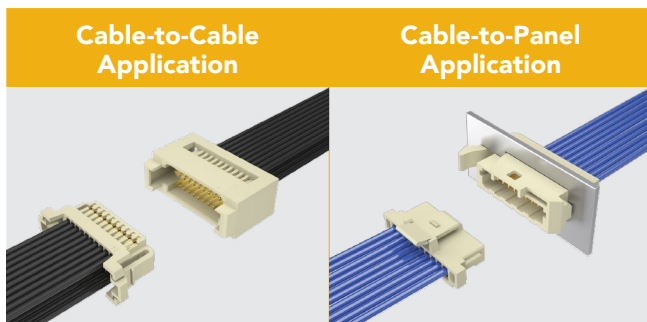
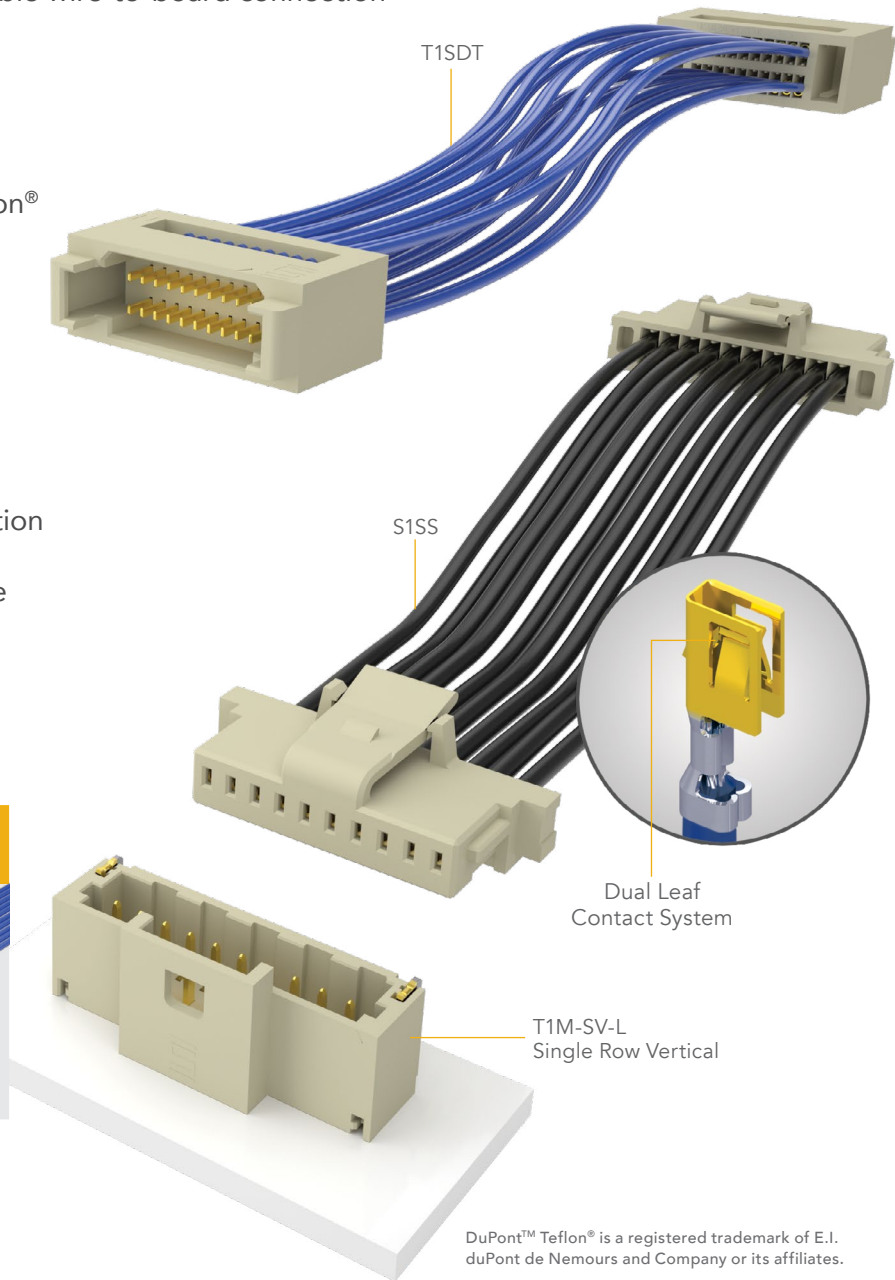


# MICRO DISCRETE WIRE

## 1.00 mm PITCH CABLE SYSTEM

- Crimp-style dual leaf contact system for reliable wire-to-board connection
- Low profile design down to 3.2 mm
- Single or double row up to 40 total pins
- 28 and 30 AWG cable options in PVC or Teflon®
- 3.3 A/pin (28 AWG)
- Choice of socket and terminal assemblies
- Cable-to-board, cable-to-cable and cable-to-panel applications
- Rugged positive latching for increased retention
- Mating terminal strip in vertical or right-angle
- Components and tooling available



### 1.00 mm Pitch Cable System

- **S1SS/S1SST/S1SD/S1SDT** – Socket Cable Assembly
- **T1SS/T1SST/T1SD/T1SDT** – Terminal Cable Assembly
- **T1PS/T1PST/T1PD/T1PDT** – Panel Mount Terminal Cable Assembly
- **T1M** – Terminal Strip
- **ISS1/ISD1** – Socket Body
- **CC09R/CC09M** – Contact, Full or Mini Reel

For more Discrete Wire solutions, please visit [www.samtec.com/discretewire](http://www.samtec.com/discretewire)

# 1.00 mm PITCH DISCRETE WIRE SOLUTIONS



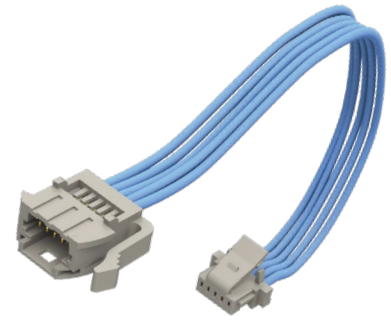
## S1SS/S1SST

Single Row Socket Cable Assembly  
PVC or Teflon®



## T1SS/T1SST

Single Row Terminal Cable Assembly  
PVC or Teflon®



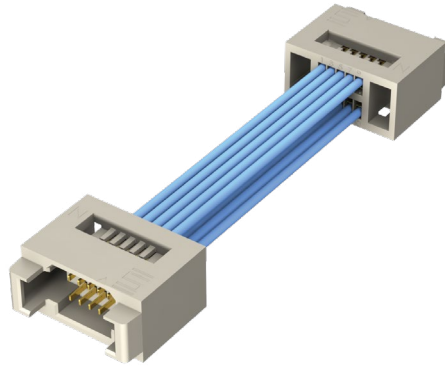
## T1PS/T1PST

Panel Mount, Single Row  
Terminal Cable Assembly  
PVC or Teflon®



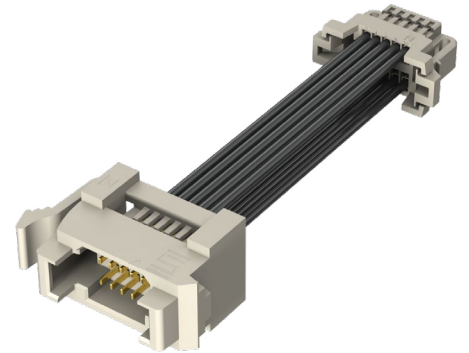
## S1SD/S1SDT

Double Row Socket Cable Assembly  
PVC or Teflon®



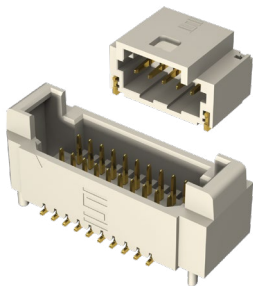
## T1SD/T1SDT

Double Row Terminal Cable Assembly  
PVC or Teflon®



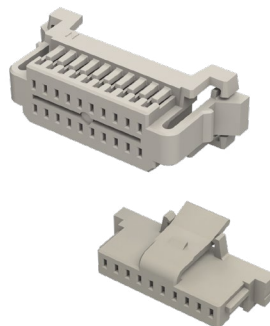
## T1PD/T1PDT

Panel Mount, Double Row  
Terminal Cable Assembly  
PVC or Teflon®



## T1M

Terminal Strip, Single and  
Double Row, Vertical and Right-Angle



## ISS1/ISD1

Single and Double Row Socket Body



## CC09R/CC09M

Contact, Full Reel (25K per reel)  
and Mini Reel (1K per reel)

### Tooling available:

CAT-HT-309-2830-12

CAT-MC-309-2830-XX-01

For more Discrete Wire solutions, please visit [www.samtec.com/discretewire](http://www.samtec.com/discretewire)