


NETWORK TECHNOLOGY 2021
ONE RANGE. MANY ADVANTAGES.

EASE
electronics



DIVERSE & AVAILABLE **THE NETWORK RANGE**

EASE
electronics

1. *PATCH CABLES*
 2. *OUTDOOR CABLES*
 3. *NETWORK INSTALLATION CABLES*
 4. *OPTICAL FIBRE CABLES*
 5. *PATCH PANELS*
 6. *NETWORK SWITCHES*
 7. *KEYSTONES*
 8. *CABLE MANAGEMENT & PROTECTION*
 9. *INSTALLATION ACCESSORIES*
- 

01 PATCH
CABLES

PROVEN & PROFESSIONAL PATCH CABLES

*THE FOUNDATION FOR HIGH SPEED APPLICATIONS
FOR OFFICE AND BUILDING CABLING
DIFFERENT PERFORMANCE CLASSES*

EASE
electronics

OVER **30 SERIES**
IN MANY DESIGNS
1,500 SKUS



01 PATCH
CABLES

BANDWIDTH OPTIONS CABLE TYPES

5 DIFFERENT CATEGORIES OF CABLES

AVAILABLE IN DIFFERENT STANDARDIZED
BANDWIDTHS:

CAT 5E = 100 MHz

CAT 6 = 250 MHz

CAT 6A = 500 MHz

CAT 7 = 600 MHz

CAT 8.1 = 2000 MHz

EASE
electronics

CAT

5e

6

6A

7*

8.1

* CAT 7 raw cable with CAT 6A connectors

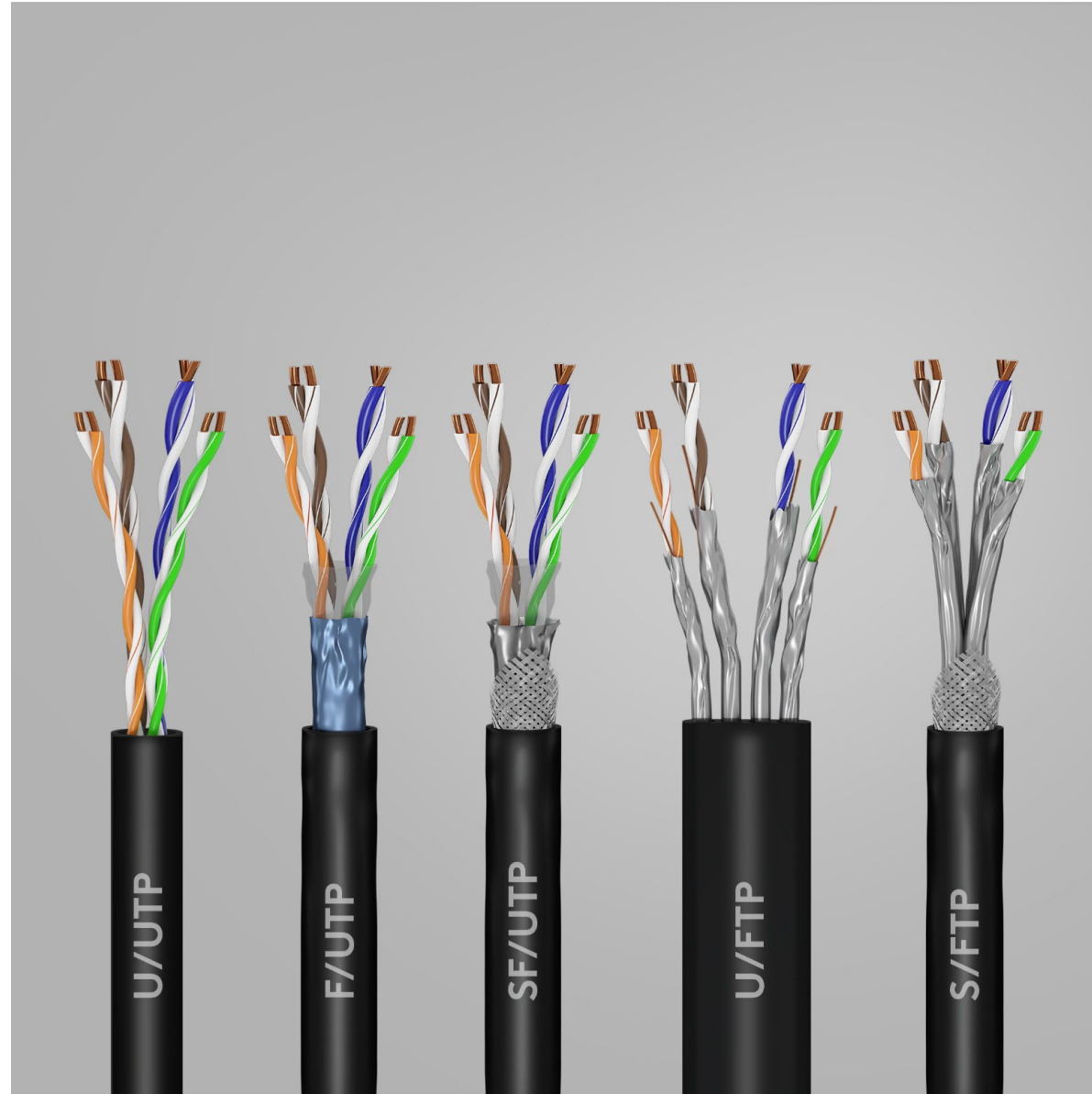
01 PATCH
CABLES

WITHOUT INTERFERENCE SHIELDING

FIVE DIFFERENT TYPES OF SHIELDING

*PROTECT AGAINST ELECTROMAGNETIC
INTERFERENCE*

EASE
electronics



01 PATCH
CABLES

HIGH QUALITY MATERIALS

FROM COST-EFFICIENT TO HALOGEN-FREE

EASE
electronics

COPPER
PURE OR MIXED

PVC OR PE

LSZH



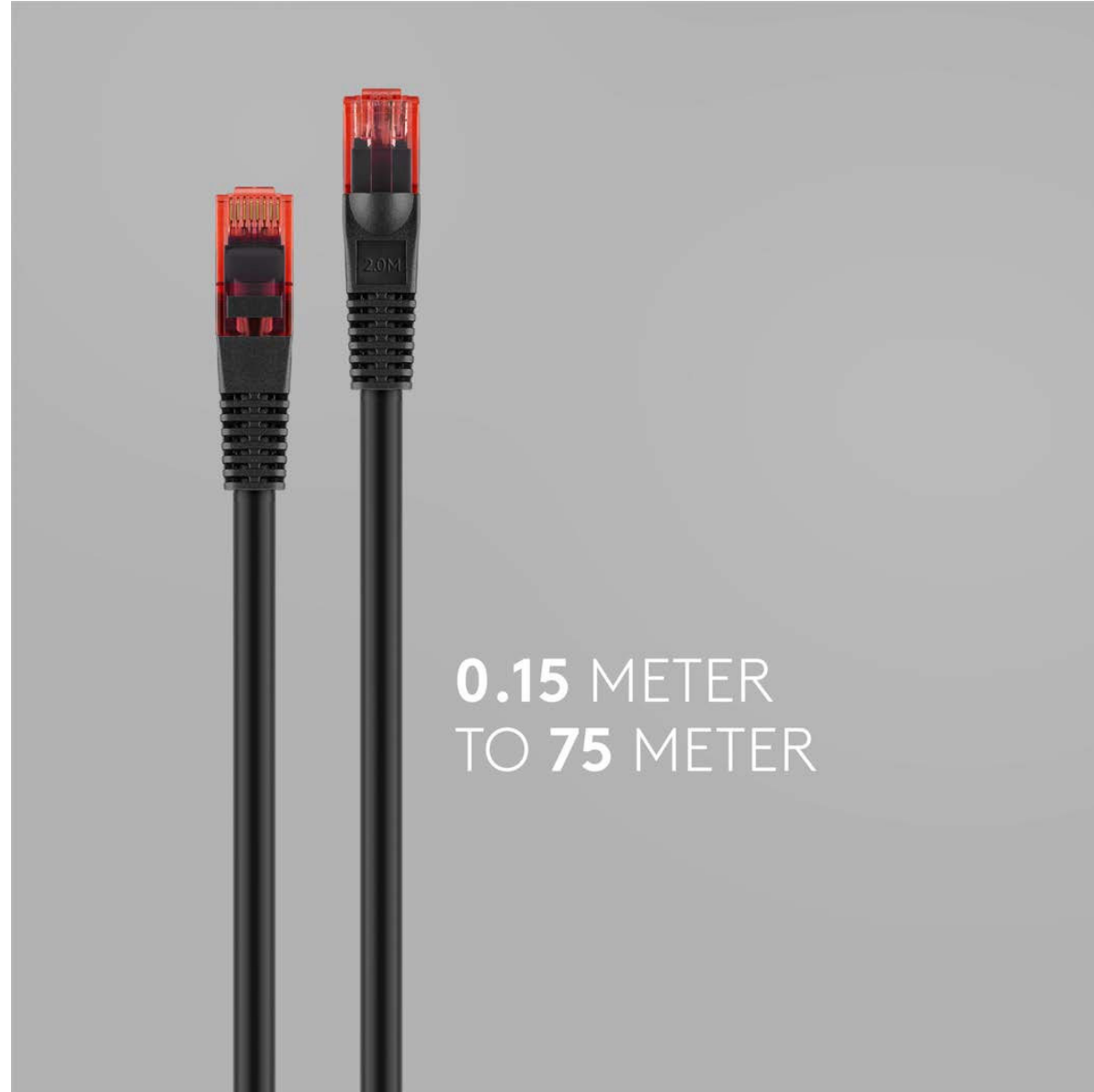
*01 PATCH
CABLES*

FIT IN SHORT AND LONG

UP TO 18 DIFFERENT CABLE LENGTHS

*LENGTH STAMPED ON ALMOST ALL
RJ45 CONNECTORS AND EASY TO READ*

EASE
electronics



0.15 METER
TO **75** METER

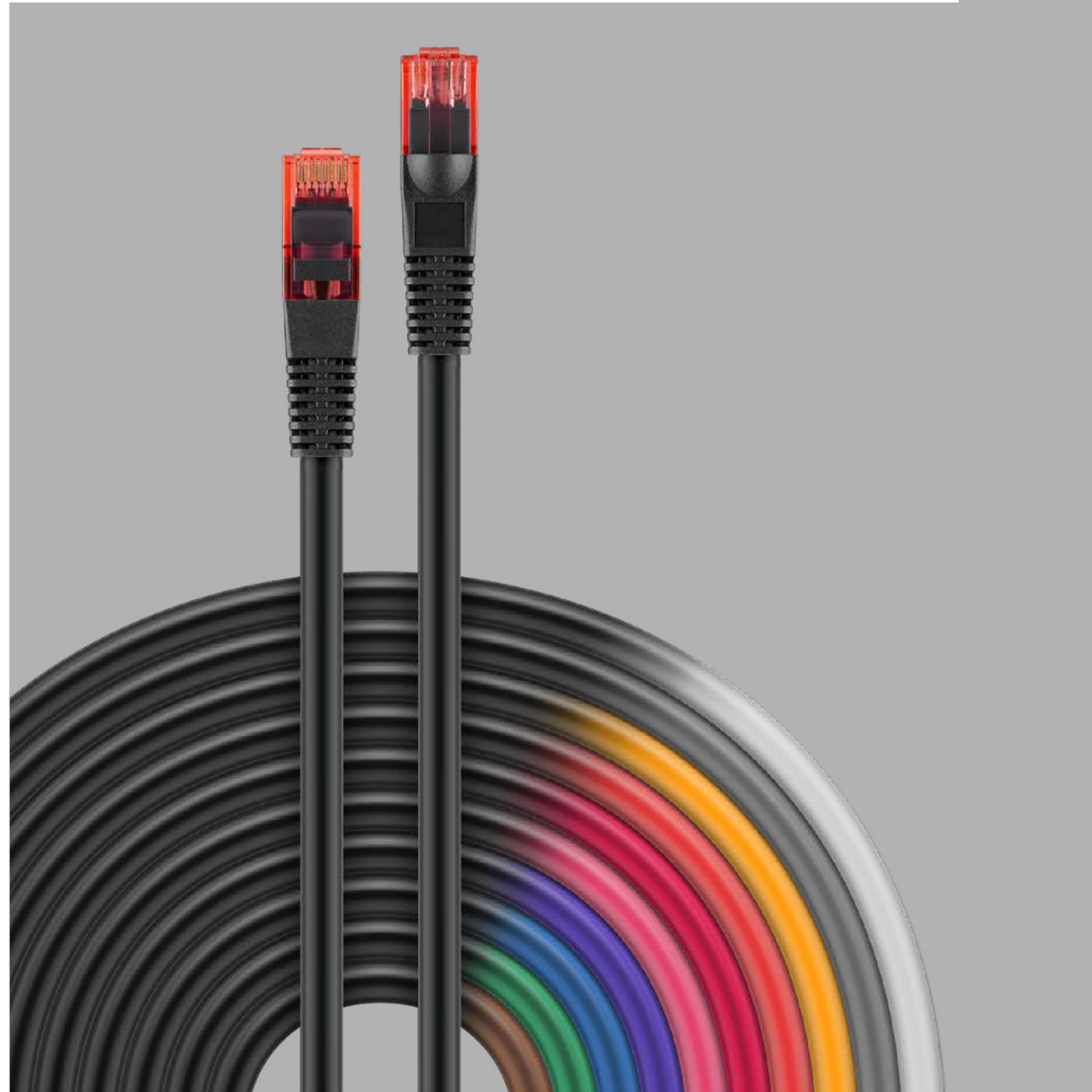
01 PATCH
CABLES

CLEARLY STRUCTURED 11 CABLE COLOURS

FOR STRUCTURED CABLING

COLORS FACILITATE ORIENTATION

EASE
electronics



01 PATCH
CABLES

INTUITIVE PLUGS WITH COLOR CODE

CAT 5E

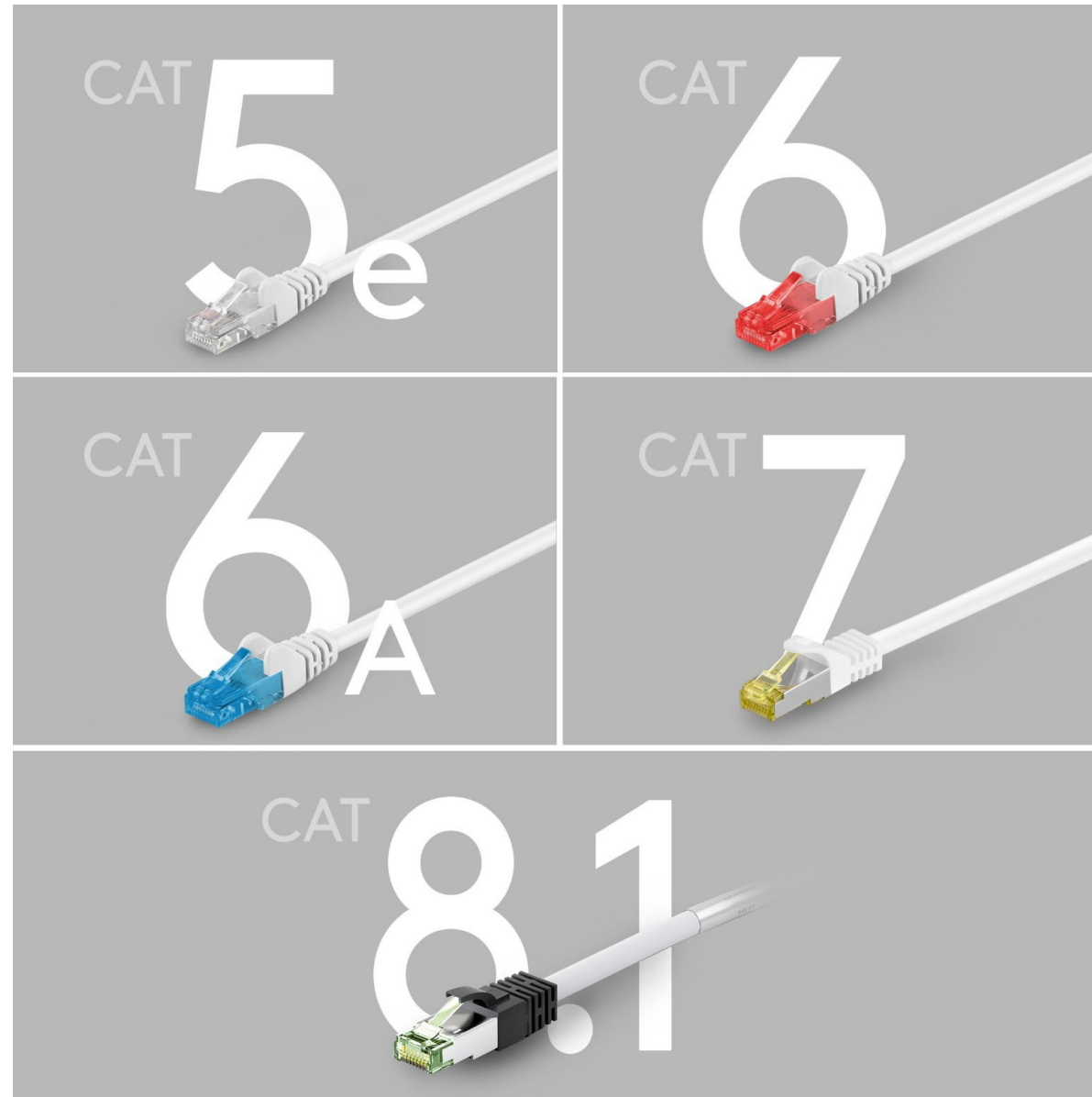
CAT 6

CAT 6A

CAT 7 RAW CABLE

CAT 8.1

EASE
electronics



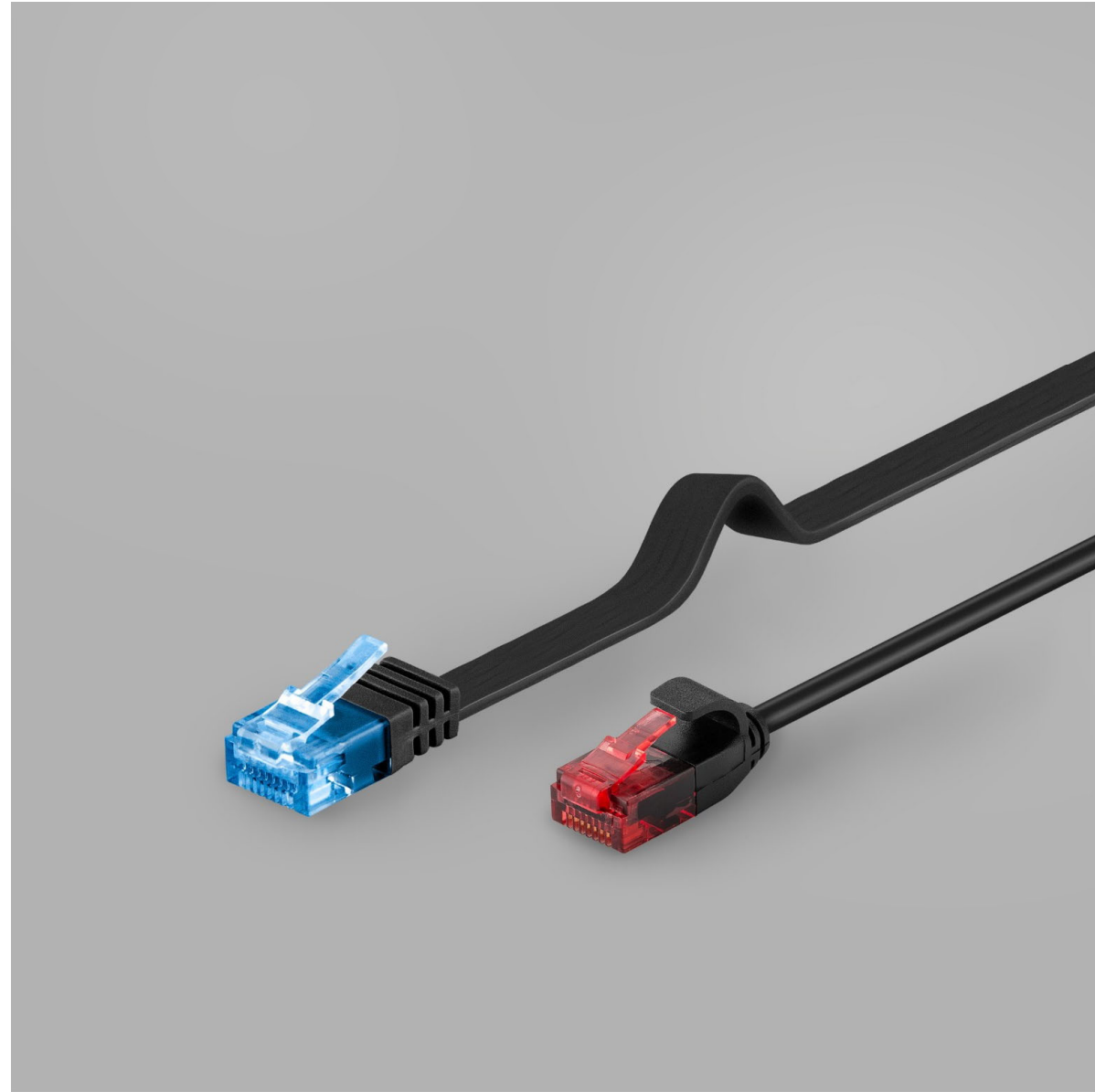
*01 PATCH
CABLES*

OUTSTANDING THIN & FLEXIBLE SLIM & FLAT CABLES

SLIM PATCH CABLE
*AVAILABLE AS CAT 6
U/UTP EXTREMELY
FLEXIBLE*

FLAT PATCH CABLE
*AVAILABLE AS CAT 5E/CAT 6 & CAT 6A
SHIELDED OR UNSHIELDED*

EASE
electronics



01 PATCH
CABLES

SPACE SAVING ANGLED PLUGS

1 x 90° ANGLED OR 2 x 90° ANGLED
SHIELDED OR UNSHIELDED

EASE
electronics



01 PATCH
CABLES

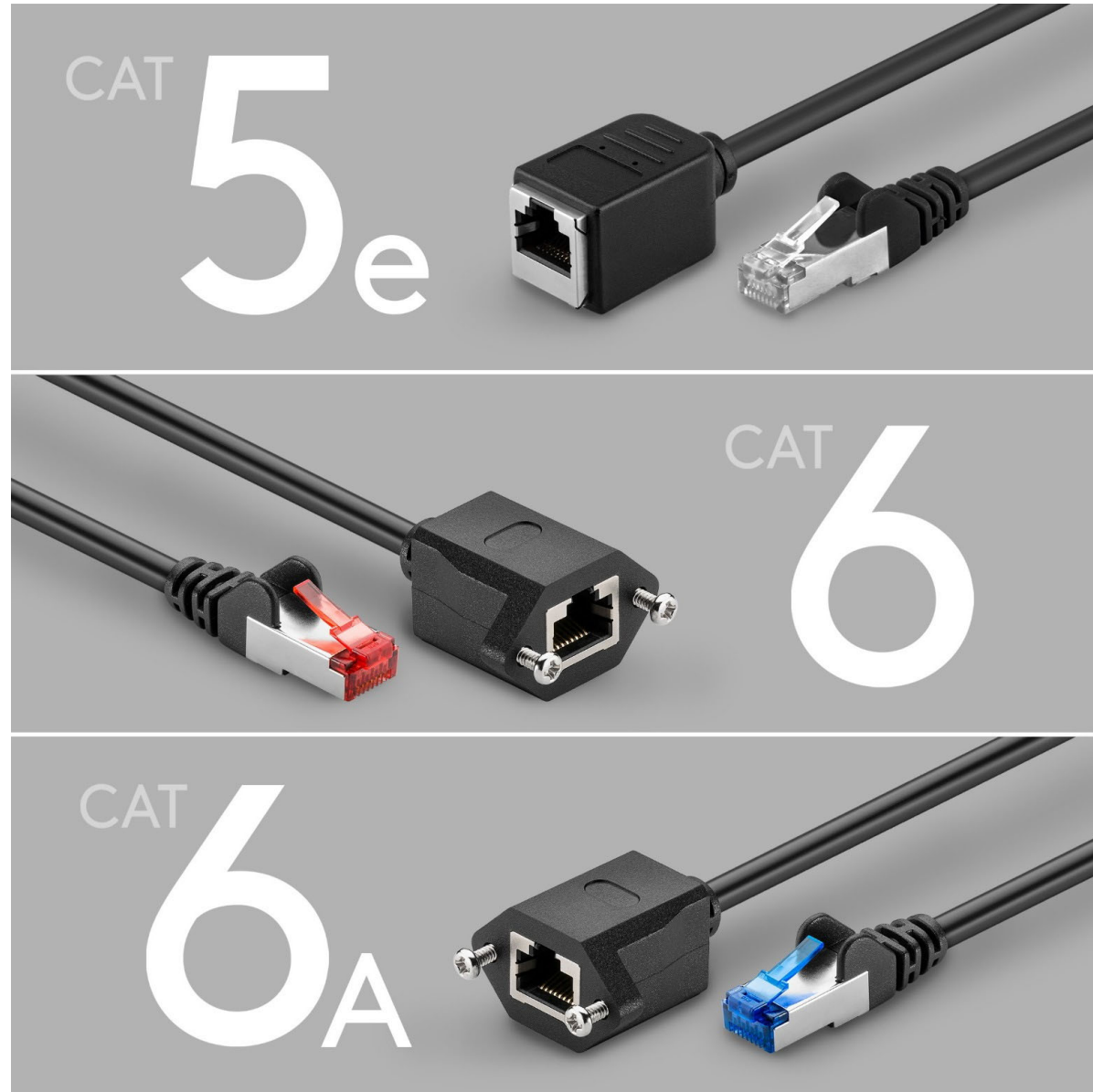
EXTENSIBLE CABLE EXTENSIONS

FOR EASY EXTENSION OF CABLES

*OR FOR RELOCATING HARD TO REACH
CONNECTORS*

AVAILABLE AS CAT 5E, CAT 6 AND 6A

EASE
electronics



02 OUTDOOR CABLES

ROBUST, WEATHERPROOF & STRONG AGAINST UV OUTDOOR CABLES

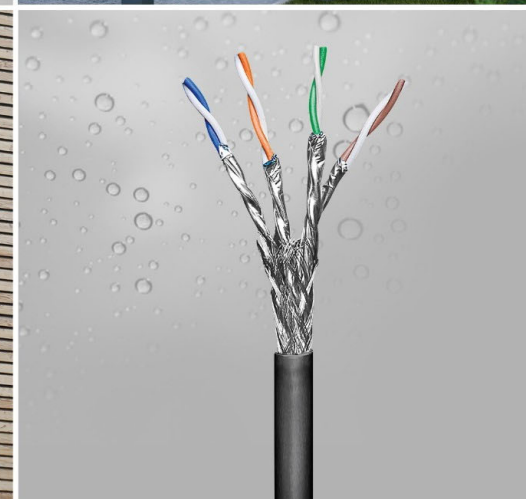
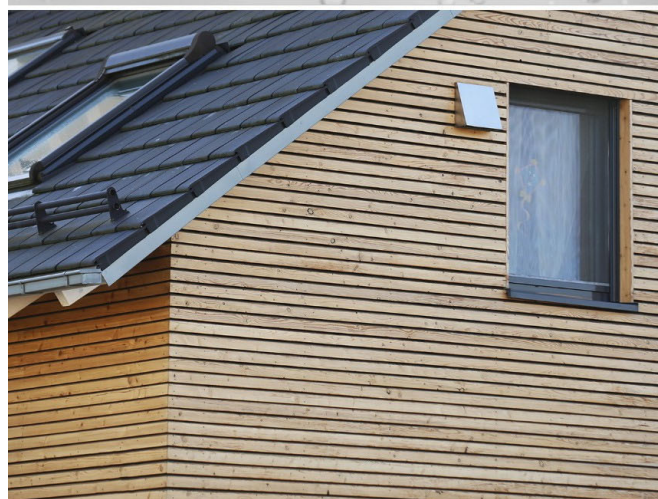
AVAILABLE AS CAT 5E AND CAT 6

SHIELDED OR UNSHIELDED

AS PATCH CABLE OR INSTALLATION CABLE

OPTIMAL FOR GARDEN, TERRACES, BUILDING
FACADES, CAMPING

EASE
electronics



02 OUTDOOR CABLES

DUST & WATERPROOF MODULAR COUPLERS

FOR CONNECTING OR COUPLING

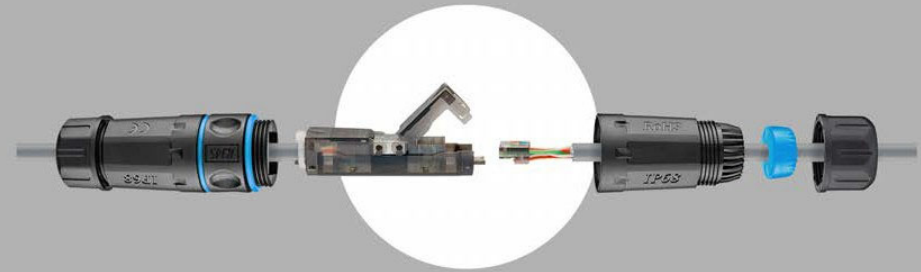
FOR IDC* MOUNTING OR RJ45 CONNECTOR

CAT6 OR CAT 6A

SHIELDED OR UNSHIELDED

*INSULATION DISPLACEMENT CONNECTOR

EASE
ELECTRONICS



CONNECT



COUPLE

03 NETWORK INSTALLATION CABLES

UP TO 500 METERS LONG NETWORK INSTALLATION CABLES

90 ARTICLES

AVAILABLE AS CAT 5E, 6, 6A, 7, 7A,

7A+ SHIELDED AND UNSHIELDED

SOLID OR STRANDED INNER CONDUCTOR

PVC/PE OR LSZH

FROM OUTDOOR TO HALOGEN FREE

LENGTHS IN M: 50, 100, 250, 305, 500

EASE
electronics



*04 OPTICAL FIBRE
CABLES*

ULTRA FAST OPTICAL FIBRE CABLES

DATA TRANSMISSION AT LIGHT SPEED

*DESIGNED FOR OFFICE, INDUSTRY AND DATA
CENTERS*

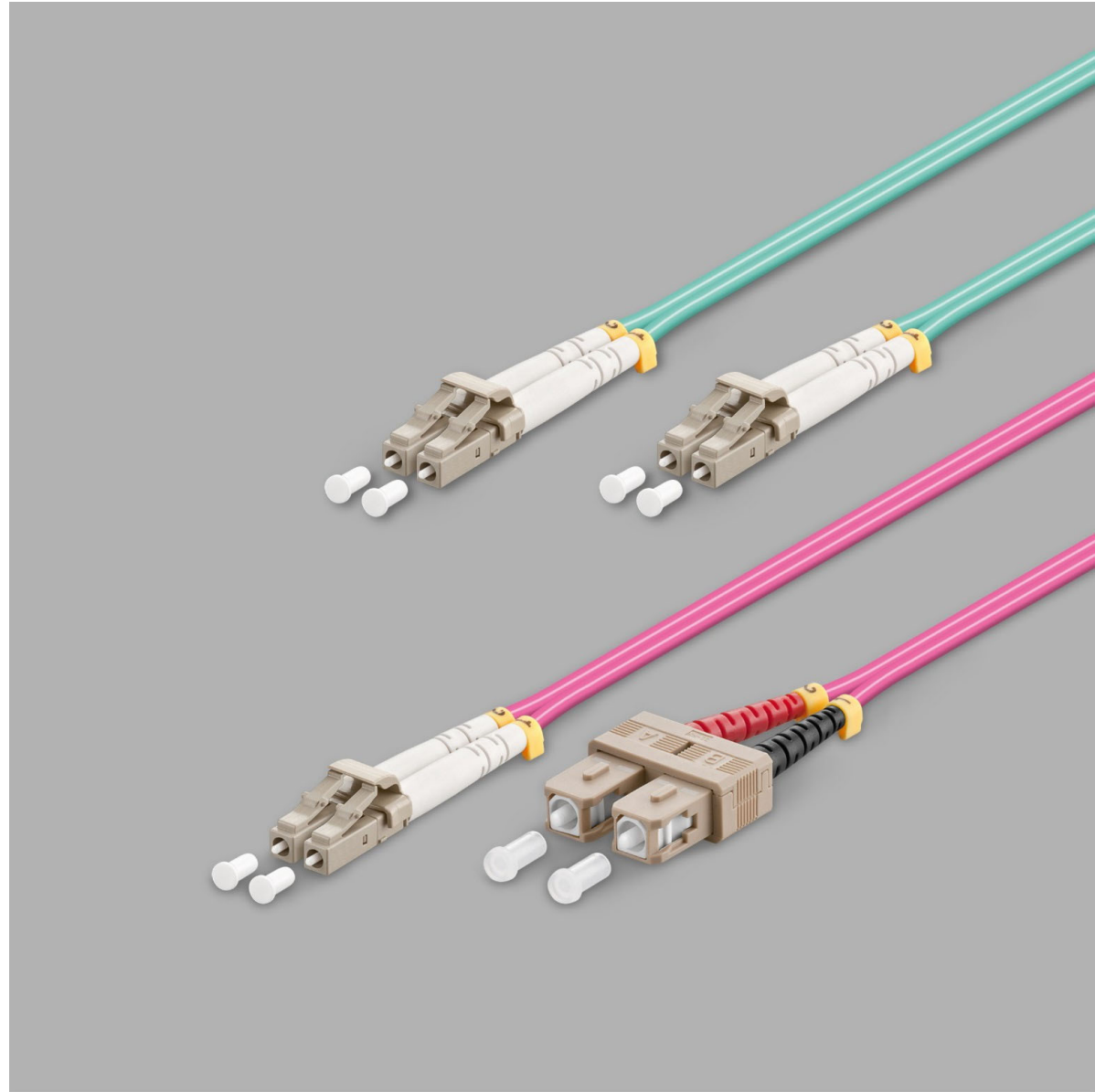
DUPLEX MULTIMODE OM3 OR OM4 FIBERS

*CONNECTOR VARIETY IN VARIOUS
COMBINATIONS*

LC/SC TYPES

LENGTHS IN M: 0,5-20

EASE
electronics



05 PATCH
PANELS

FROM MINI TO MAXI PATCH PANELS

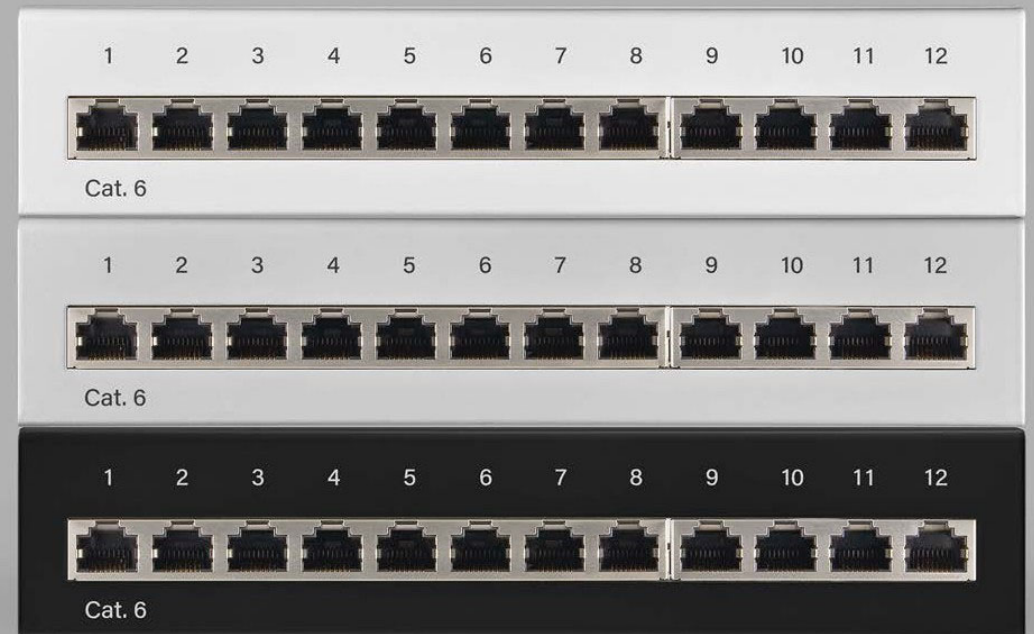
THE CONNECTING ELEMENT FOR CABLES

AS 8/12/24 PORT VERSION

IN 10"/19" OR MINI (FOR DESKTOP MOUNTING)

EASE
electronics

20 PATCH PANEL TYPES



06 NETWORK SWITCHES

ENERGY EFFICIENT NETWORK SWITCHES

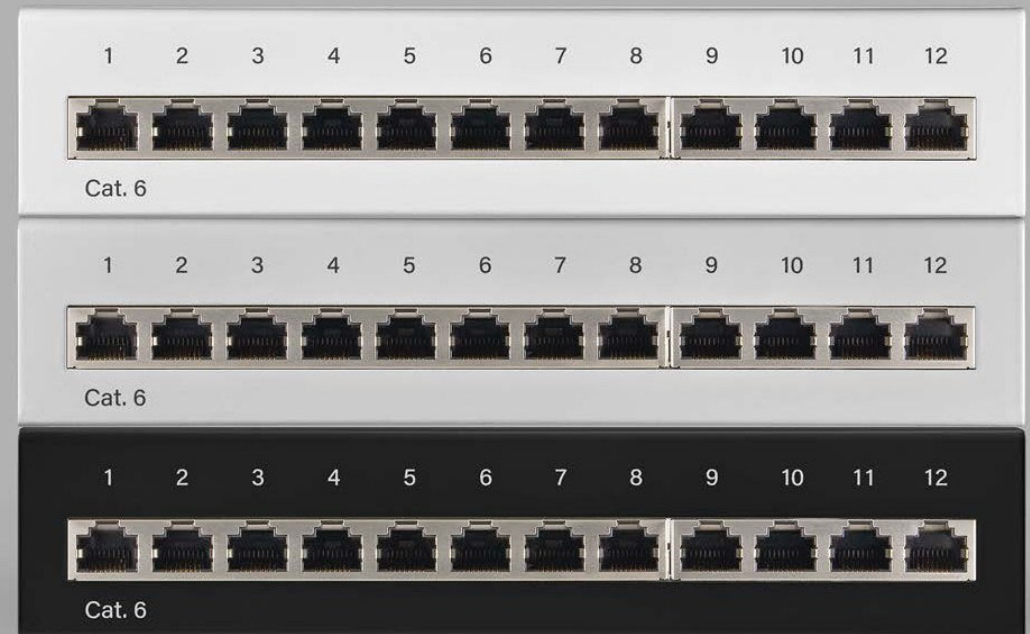
*THE CONTROL CENTER FOR A WIRED HOME
NETWORK*

*EXPANDS THE NETWORK WITH ADDITIONAL
CONNECTION OPTIONS OF 10-/100-/
1000-MBIT/S*

WITH 5 TO 8 RJ45 PORTS

EASE
electronics

20 PATCH PANEL TYPES



07 KEYSTONES

INDIVIDUAL & UNIVERSAL KEYSTONES

*VERSATILE: PLUG-IN CONNECTIONS CAN BE
COMBINED AS DESIRED - JUST AS
REQUIRED*

*SIMPLE SNAP-IN ASSEMBLY WITHOUT
SOLDERING MODULES FROM NETWORK TO USB
TO ANTENNA*

EASE
electronics



08 CABLE MANAGEMENT & PROTECTION

EASY & RELIABLE CABLE MANAGEMENT

FLEXIBLE SLOTS AND CLIPS

ORGANIZE CABLES EASILY

AVOID DAMAGE TO CABLES

*WITH 3M ADHESIVE SURFACE FOR LONG,
RELIABLE HOLD*

CAN ALSO BE USED IN THE CAR

EASE
electronics



08 CABLE MANAGEMENT & PROTECTION

REMARKABLY SAFE CABLE PROTECTORS & MARKERS

DUST COVERS

*KEEPS RJ45, ISDN, NETWORK OUTLET AND
PATCH PANEL CLEAN*

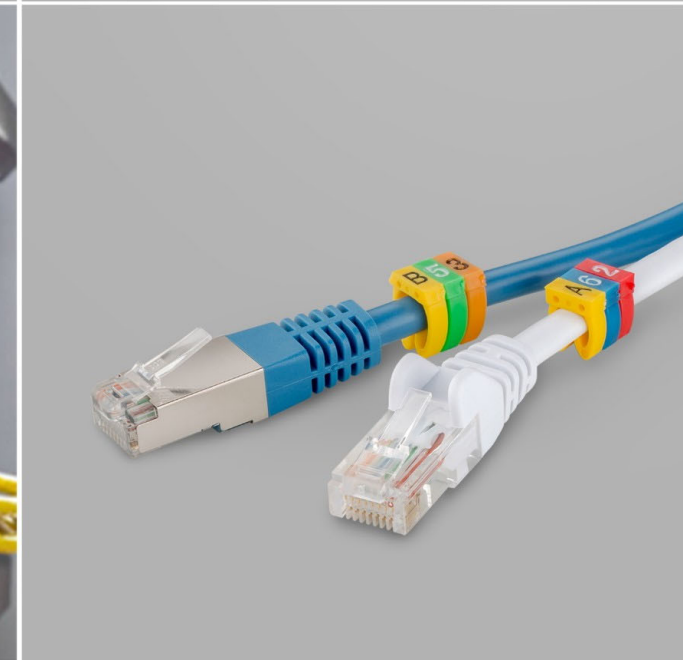
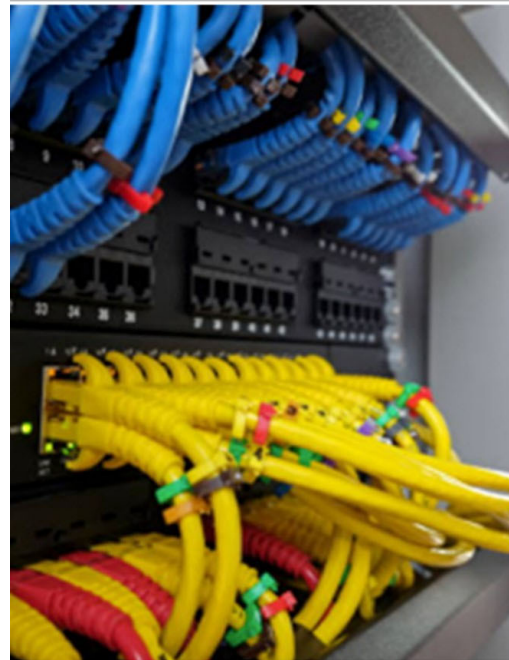
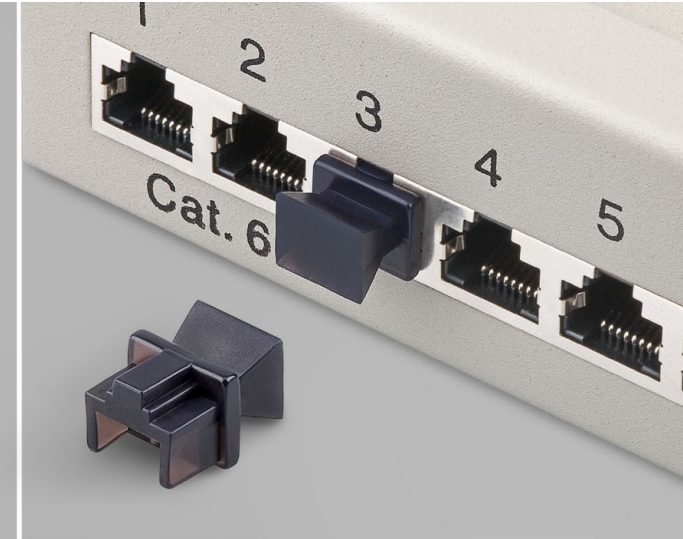
LATCH & NOSE PROTECTOR

*PREVENTS CABLE SNAGGING AND BREAKAGE OF
LATCH LEVER AND LUG*

CLIP ON CABLE MARKER

*WITH NUMBERS (0 TO 9) OR LETTERS (A, B, C)
FOR CABLE DIAMETERS FROM 2,5-6 MM²*

EASE
electronics



09 INSTALLATION
ACCESSORIES

EXTRA CONVENIENT ACCESSORIES FOR THE INSTALLATION

A LARGE SELECTION OF

WALL PLATES

CONNECTORS

HUBS

SOCKETS

TOOLS

MEASUREMENT DEVICES

EASE
TECHNOLOGIES





ALWAYS THERE FOR YOU CONTACT

NO.103, 1/F, BLDG 1,
NO.25, XINKE 2 RD, DOUMEN, ZHUHAI
GUANGDONG PROVINCE,
CHINA

Phone: +86 756 5888810
sales@ease-electronics.com

Product and packaging illustrations similar.
Errors and omissions excepted.

© Ease Electronics

