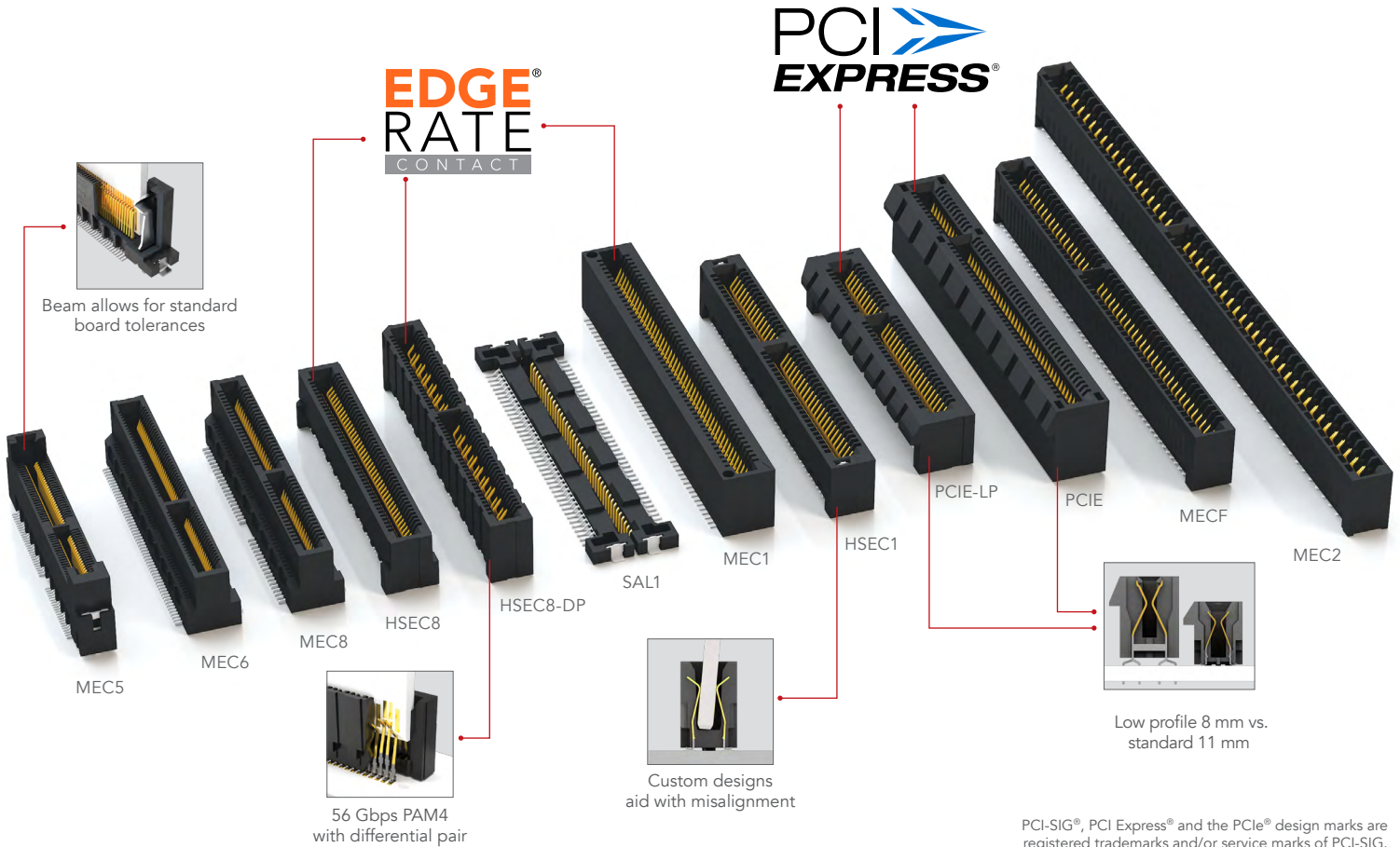


EDGE CARD FLEXIBILITY

HIGH-SPEED, MICRO EDGE CARD SOCKETS

- Maximum design flexibility
 - Performance up to 56 Gbps PAM4
 - Pitch: 0.50 mm, 0.635 mm, 0.80 mm, 1.00 mm, 1.27 mm, 2.00 mm
 - Pin Count: 10 – 300 total positions
 - Orientation: vertical, right-angle, edge mount, pass-through
 - Options: power/signal combo, press-fit tails, PCI Express®, rugged weld tabs, locks and latches
- High-speed, high-cycle Edge Rate® contacts (HSEC8, HSEC1)
- Single-ended or differential pairs
- Mates with 1.60 mm (.062") or 2.36 mm (.093") thick cards
- Low profile and elevated body heights
- Custom designs compensate for misalignment (HSEC8-DV, HSEC1-DV)
- Supports PCIe® Gen 4 (MEC5, PCIE-LP)
- High-speed cable mates available (ECDP, PCIEC)
- Meets transmission demands for broadcast video applications, visit samtec.com/12gsdi



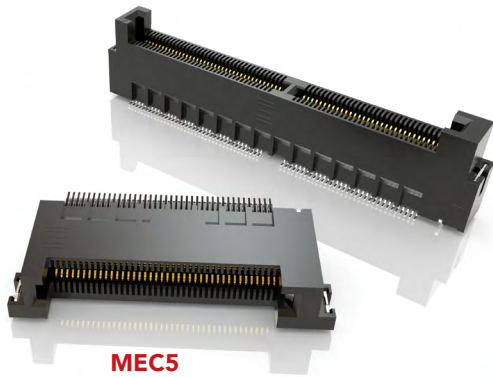
System

- **MEC5** – 0.50 mm Pitch Low Cost Sockets
- **MEC6** – 0.635 mm Pitch Micro Sockets
- **MEC8** – 0.80 mm Pitch Micro Sockets
- **HSEC8** – 0.80 mm Pitch Edge Rate® Sockets
- **SAL1** – 1.00 mm Pitch Through Board Sockets
- **MEC1** – 1.00 mm Pitch Sockets
- **HSEC1** – 1.00 mm Pitch Edge Rate® Sockets
- **PCIE** – 1.00 mm Pitch PCI Express® Sockets
- **MECF** – 1.27 mm Pitch Sockets
- **MEC2** – 2.00 mm Pitch Sockets

For more information about Samtec's Edge Card Solutions, please visit samtec.com/edgecard

EDGE CARD SOLUTIONS

PAM4
56
Gbps



MEC5

Justification beam allows for standard PCB tolerance
Up to 300 I/Os

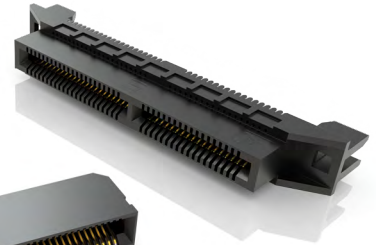
14
Gbps



MEC6

Vertical and Right-angle
Up to 140 I/Os

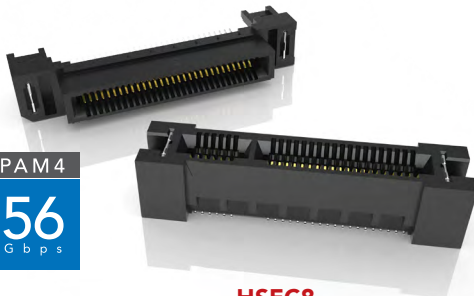
25
Gbps



MEC8

Staggered press-fit tails available
Up to 140 I/Os

PAM4
56
Gbps



HSEC8

Pass-through, power/signal combo, differential pair options
Up to 200 Edge Rate® contacts

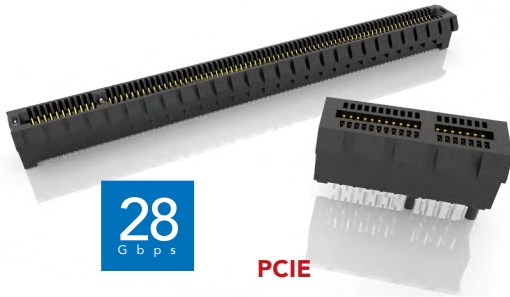
28
Gbps



HSEC1

Custom designs allow for misalignment mitigation
20 to 140 Edge Rate® contacts

28
Gbps



PCIE

Low-profile version compatible to PCI Express® Gen 4
x1, x4, x8 or x16 lanes

14
Gbps



MEC1

Vertical, right-angle and edge mount
Up to 140 I/Os

25
Gbps



SAL1

Mounts in pairs for easy signal routing
40 to 80 I/Os per pair

14
Gbps

MECF
Choice of card thickness and rugged weld tabs
Up to 98 I/Os

MEC2

Surface mount and through-hole
Up to 98 I/Os

For more information about Samtec's Edge Card Solutions, please visit samtec.com/edgecard